

# **New England Novice Extravaganza 7!**

**WHERE:** American Legion Dudley-Gendron Post, 156 Boston Rd, Sutton, MA

**WHEN:** Saturday, August 1st

**TIME:** Setup begins at 8 AM, show begins at 9 AM. Show generally runs until at least 4 for Intermediates and earlier for Novices.

**SHOW HOSTESS:** Amanda Reed

**COST:** \$25 for Intermediate (full show), \$20 for Novice (full show), \$10 for Performance & Fun Classes Only (either Intermediate or Novice Performance).

**DEADLINE FOR ENTRY:** Saturday, July 25th. Any late entries will be charged an additional \$5.

**LIMITS:** Entries are limited to 28 spots. Please be sure to get your entries in as early as you are able to! We nearly sold out in 2019!

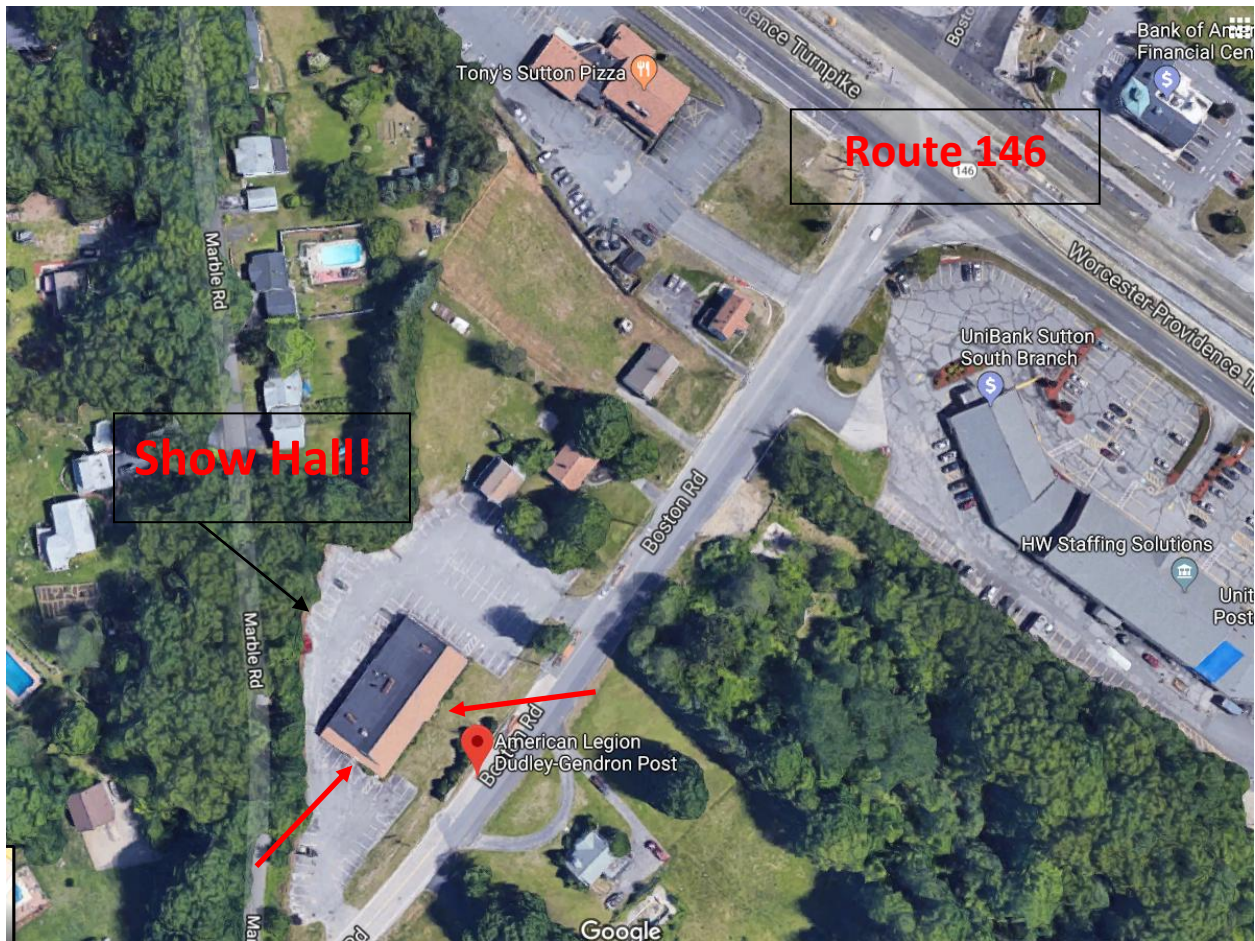
**JUDGES:** TBA

NENE is a novice model horse show designed for showers who are young, new to the hobby, or returning from a hobby hiatus. This is the perfect way to get into the competition without the pressure of facing seasoned showers. It is also a great way to learn more about the hobby, real horses, and how live shows work. Most of all, we strive to provide a fun atmosphere- because that's the best part!

## **DIRECTIONS!**

**From the MASS PIKE:** Take Exit 10A. Stay to the right to take a right over the small bridge, then merge onto Rt. 146 South. Follow 146 until you reach the intersection with the traffic light. Take the right onto Boston Road. You will pass Tony's Pizza on the right just before the turn. There will be a couple houses on the right and then the American Legion will be right there (see map below).

**From the SOUTH:** Follow Rt. 146 North until you reach the intersection with Boston Road, take the left. American Legion will be on the right (see map below).



#### **PARKING:**

As you can see in the photo, there is plenty of parking! The entrance is on the front face of the building (street facing) in the middle- it juts out slightly from the building and there's a path up to it. See the red arrows pointing out the entrances. Important note that the hall is not whole building, so please do not use any other door besides the one I've pointed out. The second arrow on the side of the building points out additional parking if needed. The door on that side of the building leads into a closet through which it would be difficult to get totes through, so please use the front entrance- however, there is a porch that runs all the way across the front of the building so it is fairly easy to get to the front door from either side of the building. \*There may be a step up to the porch on the side with the smaller lot, so just be aware if you cannot do stairs.\*

#### **LODGING:**

For those who are traveling from further away, I'd recommend staying in Auburn. Worcester has more hotels, but can be very confusing to navigate for those not used to it (kind of like Boston!)

\*I have not confirmed that these places are still in business, just grabbing some options off Google.\* Auburn is 15-20 minutes from the hall.

Comfort Inn Auburn-Worcester, La Quinta Inn by Wyndham Auburn Worcester, Holiday Inn & Suites Auburn, Fairfield Inn & Suites by Marriott Worcester Auburn, Hampton Inn Auburn.

### **GENERAL INFORMATION:**

- The show hostess, show staff, judges, and hall owners/managers are not to be held responsible for any property damage, theft, or injuries that occur on the premises. This is a small show and while we do not expect any issues, please be vigilant and aware.

- Suggested placements for people who aren't sure which division they should show in: Children under the age of 10, hobby newbies of any age, less familiarity with live showing, has been to none or only a couple live shows- NOVICE. New to live showing but not the hobby, understands how model horse shows work/have attended but never shown (teen/adult), returning from hiatus, have been to several shows or more, done very well in the Novice division (champ/reserve, lots of 1st/2nd places in good size classes) and ready to move up- INTERMEDIATE. If you are truly a "Beginner", this is your first show and you are very young and/or very new to the hobby, do not fear. I will be offering you additional support via email/messaging prior to the show and I will be sure to check in with you a lot on show day.

- There may be an entrant with a service dog (trained!) present. Please let me know if you are allergic to dogs- if you are able to be in the same room, and if that requires you to be seated as far away as possible.

- There will be a raffle! If you are able, please bring an item(s) to donate! Model horses of any sort, model horse items such as tack and props, horse books, anything related to real or model horses are welcomed. Gift cards are also great- particularly food or travel related to help out our friends who might be coming from a distance! Proceeds will go towards the show's expenses. All items will be randomly drawn, and when possible, the pull will be done by someone in the room who has not entered for the item. The raffle is typically pulled around 2-3 PM. See the check in table to buy tickets! \$1 each or 6/\$5.

- Sponsorships! If you are interested in a sponsorship, please let me know! Sponsorship levels are: individual class, section (such as Intermediate Breyer Regular Run Collectibility), or division (such as Novice Performance). Note that not all divisions are the same size! Sponsors will have their names announced (if they wish) prior to the class/section/division. Sponsors are allowed to enter their sponsored classes/sections/divisions. This does not affect judging and it is only fostered to help diffuse show costs.

- The show will BEGIN at 9 AM! Please have your entries for the first classes ready to go by 8:55 (especially those entering Performance!) Plan to be at the show hall at 8:30 at the latest- even if you do not have a large herd to set up. Early arrivals will be allowed, but if you show up earlier than 7:45, we'll still have a lot of work to do setting up! Please no earlier than 7:30.

- Placings in all divisions will go to 10th for individual classes and models will be awarded commercial silk flat ribbons. Most of these are NENE ribbons, but there are still a few recycled BreyerFest ribbons kicking around. The Novice division- Starting in 2020 the Novice Breed division will have Champion & Reserve, plus Top 10 to make up for no Sectionals. Collectibility and Performance will still be Champion & Reserve only. They will receive rosettes for overall champions and reserves that will be different from the Intermediate rosettes :). The judges will be encouraged to award Honorable Mention flats to callbacks with larger numbers at their discretion. The Intermediate Performance division will not have sectionals, but will be awarded a Top 3 in addition to the Overall Champion and Reserve. Workmanship will have a Top 10 + Champion & Reserve, no sectionals. Intermediate Breed & Intermediate Collectibility will have sectional Champs and Reserves (just the stablemate trophies) and Overall Champs (Trophies plus Rosettes). All Overall Champions and Reserves in any division will also get Stablemate Trophies, per usual. Amateur Owner (custom), and Fun Classes will not have champ/reserve and are open to everyone. AO classes will be awarded commercial flats and the Fun classes will have "fun" prizes as always. TBA closer to the show.

- LUNCH: We will be ordering food from Tony's Pizza! My aunt or another show staff member will go pick up our order around lunchtime (within walking distance!) I do not need to have your lunch order with your show entry, but I will be reminding you a couple weeks out by email to take a look at the menu- so we can put our order in as early as possible to beat the lunch rush. Tony's menu: <https://tonys-sutton.foodtecsolutions.com/menu>. There are a couple other options nearby, and you are of course welcome to bring your own food. Starbucks and Dunkin Donuts both have locations nearby for those who enjoy/require caffeine. We will likely not be taking an "official" break, but depending on how we are all feeling and how fast the show is moving when the food arrives, we may choose to fully break for lunch. Otherwise, the judges will stop to eat and then continue judging once they are done. Please keep this in mind if you plan to leave for lunch or send someone out to purchase lunch for you.

- TABLES: Novice entrants will have half a 6 foot table, Intermediates will have full 6 foot tables AS SPACE ALLOWS. If entries begin to fill up, I will be downgrading Intermediate table space to half tables as needed. Please go off the assumption that you will only have half tables until the final week before the show when I will publish the seating chart. If you are an Intermediate and you will absolutely need the full table (if you have a barn or other large props for a diorama, or have a lot of Performance props) please let me know. Sales models do not count towards

needing a full table. \*\*Aside from this, Intermediate table space will be first come, first served- those who enter early will be the last ones to be downgraded. \*\*

- SALES MODELS: There will be plenty of models for sale! The hostess, judges, other entrants, and potentially other Region 10 people may have models available for sale. Though it is to be assumed that most models in designated sales areas are able to be picked up for inspection, please always ask to pick up any fragile models (such as resins or chinas) or any model that you are not sure is for sale.

- QUALIFICATIONS: Models entered into this show are not eligible to win NAN (national show) qualification tickets. However, all models placing 1st-3rd who are not in the Fun or Amateur Owner classes will receive TRXC tickets for the Novice/Intermediate Championship (Region X Futurity) on October 24th- Schoharie, NY! Tickets are good for the next 4 years of TRXC (2020, 2021, 2022, 2023), and potentially a future Merit Awards program for Novice/Intermediate showers. For more information about TRXC, please contact Karen Pajak.

- REFUNDS: In the event that you need to cancel after you've paid, please let me know as soon as possible. Refunds will be offered in full up until the entry deadline. Between the entry deadline and the show date, refunds will subtract \$5- just as any late entries are charged \$5. If you do not show up on the show date, make no effort to contact me during the show, and I have not heard from you by the following Monday, no refund will be issued.

- A note for awareness to new people who might not understand how live shows work! With the exception of extremely rare packaging, models are expected to be removed from their boxes/blister cards for judging. The judge needs to be able to see the model from all angles to properly evaluate the horse. Examples of rare packaging are: Showcase boxes, Touchability boxes, both experimental packaging from the 1970's. If you have a special or older box (1950's-1970's/early 80's), you are welcome to put it next to the horse to be judged in Collectibility- however, please be conscious of space- the box can be displayed behind the horse or the horse can stand on a box that's laid down (provided doing so would not create an unstable base for the model to stand on).

- TABLE DECORATION CONTEST: To be announced!!

- NEW for 2020! Last fall, the beloved Breyer dealer Crop & Carrot went out of business due to the owner's retirement. They donated several bags of extra "Breyer Show participant" rainbow flats from their Fun Days to NENE. This year, we will be using those flats for Fan Appreciation Awards! How does this work? Each entrant will get X number of these flats to distribute during the day. When you see someone else's horse out in a ring that you totally love, give them one! Each horse can only win one of these per class, however, no need to stroke their egos too much! The goal is to spread love, appreciation, and community. (Please just be mindful of any

judges who are working near you and make sure you aren't in their way.) If amounts permit, I may also give ribbons to other people in the room (i.e. parents) if they want to participate as well.

- INTERNET ACCESS/CHARGING: There WILL be Wifi access at this hall! I will have the network and password available at the front table of the hall. You should have enough outlets to charge your devices as needed.

### **GENERAL HALL RULES:**

- NO Running in the hall!

- Every child under the age of 13 must be accompanied at all times by a responsible adult. I am not here to babysit your children and neither are my judges or show staff.

- Please do not bring young children who will not be participating in the show unless they are VERY quiet/well behaved. It's a long day and there's nowhere for them to safely play.

- No loud music, smoking, alcohol, animals outside of well behaved, specifically trained service animals.

- Do not touch anyone else's show models without permission. Ask about sales models if you aren't sure if they are for sale.

- Judge's decisions are final. If you have ANY major concerns about the judging, please bring it up with me AT the show so I can address it right away.

- Poor sportsmanship will not be tolerated. If the behavior continues and you have been asked to stop, you may be asked to leave the show.

- You are to have respect for everyone in the room- the judges, the hostess, the staff, the other entrants, and the entrants' friends/families.

- Most importantly: Have fun!! :)

### **HOW DO I GET STARTED?**

NENE is a participant in the Region 10 Tag System. What's that, you might ask? It is a number system that assigns each shower who participates in Region 10 shows their own unique 3-digit number. Showers use this number to make their show tags. I'll explain that a bit more soon!

### **WHERE CAN I GET A REGION 10 NUMBER?**

To get a Region 10 number, go to our website [www.regionxnation.com](http://www.regionxnation.com), and click the green "Start Here" button in the middle of the page. This will prompt you to fill out a form to generate a Region 10 number.

The system should give you a number right away once you have filled out the form. **If you do not have a Region 10 number, you will not be allowed to enter. Get your number FIRST.**

### **NUMBERS? TAGS? I'M CONFUSED!**

Once you have an account with the Tag Manager, you're ready to enter your models into the system. This only needs to be done when you're entering new models for the first time. Each model needs its own 3-digit number that will follow your own, like this: 123-456. The numbers you've assigned to your horses in the tag system and what is written on their tags needs to match. You need to have your models named, breeds assigned, finish (if it has been repainted or not) and gender assigned. The form in the system will ask for all of these fields to be entered. Filling in the "Notes" section is not required, but you may find it useful to add a visual description or another identifying factor to help you remember which horse it is- this is particularly useful for anyone who is adding a large amount of models at once that were not previously named. There will be a link at the top of the page that says "Add a New Horse". You'll enter the info into the form and choose "Save". This will be the same each time. When you're done adding models, you can select to print your entire horse list, or just some of them. Make sure you have all the ones checked off that you plan to show this time. I do not need your list prior to show day. If you have printer issues and cannot get me a physical copy on show day, I do accept lists by email under that circumstance.

When you make your leg tags, here is the information you need to have: breed, gender, finish, and Region 10 number on one side, and the model's name and your name on the other. Please write clearly, or if you dislike your handwriting, the Tag Manager has an option to print tag labels. The most common size of tag is 1 inch. Larger is okay, but try not to go too large, and especially not too small! The judges will need to be able to read the info on the tag quickly. White is the preferred color of tag (it's easier to read!), though if you only have other colored ones, that is okay.

### **WHERE CAN I FIND BREED INFORMATION?**

Information on horse breeds can be found in books, or online. It is important to have a picture of a horse in the breed you choose for it (and sometimes the color), along with the basic information about the breed's features, what colors it comes in, and what it is used for (racing, dressage, work in fields, etc.). Most people will use no more than standard 8 1/2" x 11" one sheet of paper for Breed documentation. Please note that "Warmblood" and "Pony" on their own are NOT breeds, but types. Use the list provided at the bottom to choose a breed that best suits your horse. Look up each breed that you think fits your horse in a book or online, and choose the one that fits the best. Common breeds like the Thoroughbred do not need to have documentation unless you are showing a horse with a color that rarely occurs in the breed, such as a Sabino Thoroughbred.

Generally, common breeds include the Thoroughbred, Arabian, Quarter Horse, Paint, Appaloosa, Clydesdale, British Shetland Pony, American Saddlebred, Morgan, Andalusian, Shire, and Welsh Pony.

### **HOW DO I GET MY MODELS READY TO SHOW?**

When selecting your models to show, choose those that are in the best condition or that look the most like a breed of horse. Condition is very important in Open competition- those with rubs or scratches will not do well. However, it is slightly less important in Novice/Intermediate, due to the learning emphasis. You should still show your best models though, but do not be discouraged if you don't own any perfect condition ones. After you've decided which ones you want to show, look them over carefully and dust or wash them if they have dust or dirt on them. Clean models place better. If this is your first show, it is best not to overwhelm yourself with too many entries. 15-25 is a good amount for a first show, 10-20 if the entrant is a younger child. Attach your tags before packing- this will save time in the morning of the show. The tags should be attached to an ankle that is flat-footed, touching the table. When you pack your models to show, it is important that they are wrapped first in bubble wrap or cloth (with no parts sticking out!), to prevent rubs and scratches while traveling. Many people in the hobby make pouches out of fabric that fold over at the top and are larger enough than the models inside them that there is no risk of breaking legs, tail, or ears. I recommend fleece, it's thin enough to not be bulky, but it's thick enough to protect your models. Note- for models with a custom finish (not factory); it's advised to wrap them in silk, unbleached muslin, or plastic prior to putting them in a pouch. Fleece will stick to those models! You'll want to have a nice sturdy box or plastic tote on hand to put your wrapped models in. Try to put heavier ones toward the bottom, and make sure they are not fitting too tight or too loose inside the container.

### **WHAT TO EXPECT ON SHOW DAY!**

The morning of the show, make sure to leave yourself more than enough time to travel. I'd recommend trying to be sure that you have at least a half an hour to unload and unpack. Have on hand a large (not used for makeup) powder brush to dust your models, pens/pencils, paper (notebook) or a file on a phone/tablet to record your placings and make notes for next time, water, non-messy snacks, a copy of your horse list for me, and extra supplies if you're showing in performance. When you arrive at the show hall, come in and see me at the check-in table. I'll let you know where you're sitting- your packet and nametag will be on your table. Bring your things in and unpack- and make sure the models for your first few classes are ready to go. Before the show starts, I'll need your horse list. I'll make announcements about this periodically as a reminder. 10 minutes before the show starts, begin putting your entries for the first classes out. The rings will be marked. This is especially important for those showing in Performance. I want to start as close to 9 as possible- closing the classes and starting to judge- so try your best to get your models up in a timely manner. Throughout the rest of the day, I'll make announcements about when and where things will be happening, and you can come see me if you have questions!

### **DEFINITIONS OF SHOW DAY TERMS FOR BEGINNERS!**

Throughout the day of the show, we'll be using a few common terms to direct traffic and get models into their correct classes.

A "ring" is a pair of tables that will be placed end to end in the middle of the room. There will be multiple rings going during the day. If you are a Novice, you will have fewer rings to pay attention to. Each division



will have two rings- one for setting up and one for judging. So Class A will set up on Ring 1, and while Class B is being set up on Ring 2, Class A will be judged. Then while Class B is being judged, Class C will set up in Ring 1, and so on. This saves a large amount of time.

"Pony Pound"- if you leave your models sitting through the next couple of classes beyond the one they are entered in, we do typically seek you out to remind you, but at many shows, there are not enough people/time to do this, so any models left in the ring are brought to the Pony Pound (usually at the front table). Models are typically claimed by the end of the day- or distributed to their owners at that time, but any model that is not wearing a tag, the owner cannot be identified easily. In that case, the show holder would make announcements like "is anyone missing this [model name]?" to help find the owner. This is a small show so we don't generally need a Pony Pound- so this is a reminder to keep track of your models' whereabouts- particularly the little ones! Don't worry, even experienced showers have to be reminded sometimes!

Here's what you need to remember to listen for! "First Call"- this is the time to start getting your horses and anything they require with them up to the table. There tends to be a rush at this point- anyone who is prepared and isn't doing anything else will come up to the ring all at once. If you are currently doing something else important, make sure to finish up with that and grab your horses to put in the ring that's just been called. "Second Call"- this is when you really need to make sure your horses are up, your documentation if needed is set up, and your model is dusted. "Final Call"- if the judge says this, she is about ready to start judging and is looking for last minute entries. If you have another horse or are not done setting up, say something! Silence is considered to be a "No" to "any more entries?" "Class is Closed"- this means no more entries are being accepted and no more adjustments (performance people) are to be made, and the class will be judged. It is appropriate at this time to move away from the show ring and give the judge space to work. "Class is done/finished/pinned, you may collect your entries"- the class is done, so go see how your model(s) did! If you have any questions about the class, it's best to ask them at this time, so the judge will remember! The judge may follow the previous statement with "and bring up \_\_\_\_", so that would be your first call for the next class.

### **SO I WANT TO SHOW IN COLLECTIBILITY: WHERE DO I START?**

Collectibility is another type of classes that models can show in. Judges evaluate these models on condition, age, rarity, desirability, and their overall impression. It is important to provide an index card for your collectibility entries that explains why your model is collectible. Include: Release dates (when the model was produced), how many were made (if known), if it was only limited to sale from a certain source or event (like Wal-Mart or BreyerFest), and if it is an unusual variation (the paint or finish looks very different from what the model normally looks like). Vintage boxes (aka picture boxes and older- no yellow window boxes!), if you have them, can be shown with the model, but not the newer boxes- these do not typically add any desirability to the model. If your horse has a signature or number on its belly, you can put a mirror underneath the horse so the judge can see it. The best website that you can use to find out which model you have is [www.identifyyourbreyer.com](http://www.identifyyourbreyer.com). You can also look in the collectors' guides written by Nancy Young, Felicia Browell, Kelly Keracher (different last name at time of publishing), and Kelly Korber Weimer for older releases. Collectibility will be split into Novice and Intermediate!

PLEASE read through the section below that relates to your division as advice will be based on each class list!

\*\*\*Breyer Models with a Run Amount of 100 or Fewer may not show in Novice Collectibility. I would suggest competing in Intermediate Collectibility if you own models like that! :) Most collectors just starting out will likely not own such limited runs.

\*\*\*Breyer Models with a run amount of 350 or Fewer are ONLY allowed to show in Collectibility (for either division). These models are often extremely well painted with details not seen on larger runs, so they may have an unfair advantage over other models in Breed.

\*\*\*Unrealistic and Fantasy models are allowed to show here, and in creative performance setups, but not in Breed. There is no Breed Standard for Unicorn!

\*\*\*Holiday and Halloween models are considered to Regular Runs for the purposes of this show. They are widely available and the Holiday models are promoted in Breyer's catalogs. This includes the Traditional scale releases which are not limited in number or source. Others, such as Night Mare (limited in number) and the recent Breyer Website Halloween releases should be considered Special Runs. If you have questions please ask before the show!

#### How do I determine which collectibility class my horse goes in- NOVICE EDITION

If your model isn't a Breyer, it goes in the All Other Brands class. If your model is a Breyer, determine whether it is a regular or special run. Regular runs are models that are available to all dealers as well as directly from Breyer, usually for at least a half a year. Special runs are made for a specific event, club, promotion, or dealer/set of dealers and are usually limited in number and/or are released for a short period of time. There are three classes for Regular Run models. Find out which year your model was introduced and see which of the classes it goes in. If your model is a Special Run, determine whether or not it was released for BreyerFest. The BreyerFest models have one class, and all other Special Runs go in the other class.

#### How do I determine which collectibility class my horse goes in- INTERMEDIATE EDITION

If your horse isn't a Breyer, it either goes in the Peter Stone or Other Make classes. Stones are split into two classes- Runs of 99 or Fewer, and Runs of 100+. DAH models will show in the 99 or fewer class. For the Other Brand classes- Class #13 is intended for Copperfox, Hartland, and Knockoff/Japan/Made-in-China plastics. Knockoffs are hard plastic models that resemble Breyer molds, but generally with less detail, and sometimes have legs, necks, heads, or other parts tweaked slightly to avoid copyright infringement. They are generally made from cheaper Styrene plastic. Companies include Lido, Kroll, Ohio Plastics, and various Japanese/Korean/Chinese plastics companies. Models made by these companies that do not look like Breyers may show here too. Class #14 is for more of the "toy" brands, such as Schleich, Safari, Papo (Rubber horses) and haired models (like Grand Champions, Julips, Equorums, etc.) that don't generally compete in Open shows here in the US, but have large divisions in the UK known as CTF (Craft Toy Foundation). **CollectA Models will show in the # 14 Other Brands (Papo, Safari, other**

**Rubber/Haired brands) class. Breyer is distributing some of these models, but it does not in fact own the brand. Therefore, they will still show with the other "rubber" brands as they would have in the past.**

If your horse is a Breyer, first figure out if it is a Special Run or Regular Run. If it is a Regular Run (meaning it was available for 1/2 year or more to the general public through Breyer and from online and in-person shops), find out which year it was first offered. This will determine which RR class it goes in (NOTE: for models like MISTY who have been around for a long time, if you know when the model was first purchased, go with that date. If you aren't sure, please send a picture and I can help!) If it is a Special Run, first figure out if there were more or less than 500 made. If there were 500 or less, it goes in that class no matter what. 501 and more then are split into 4 classes. If the horse was a special run for BreyerFest, or a Celebration Model, it goes in one of those classes. If it is not from BreyerFest, see where it came from. If it came directly from Breyer, or a Breyer event that wasn't BreyerFest, then it goes in that class. If it came from another retailer or a real horse event, then it goes in that class.

**\*\*"Other Breyer Source"** - JAH, BreyerWest, Tour Stops/Signing Parties, Fun Days, Online Specials (Like Callahan and Lancelot), TH Redemption Models, Premier Club, Collector's Club Specials, Show Specials (1991-2002), etc.

**"Other Retailer/Event"** - Sears, JCPenny, Wal-Mart, K-Mart, Riegseckers, Black Horse Ranch, State Line Tack/PetSmart, Tractor Supply, Midstates (Rural King et al.), QVC, Horses International, WEG, Brick & Mortar/Flagship (Dealer Specials), USET Festival of Champions, Montgomery Ward, etc.

## **WHAT IS PERFORMANCE?**

Performance is like a "snapshot" of a horse event. The model must be wearing some sort of tack (as opposed to Breed and Collectibility, in which just the horse itself is shown), and it should be performing a sort of task that a real horse would do. Model horses can show in everything from Western Reining to Dressage and Parade. Many people are extremely creative with Performance. First of all, you'll want to find examples of a real horse performing the event in real life. Documentation in Performance means an explanation of what the horse is doing. In some events, like barrel racing, or dressage, you'll need to include the pattern or test that the horse is attempting to execute, and at what point it is at. For more unusual events, it is customary to include a brief history of the event or sport. The most important part of performance is if the equipment the model is wearing would be safe in real life. Tack that is not adjusted correctly is one of the most common ways to be marked down. Setups are also encouraged. Footing, jumps, and fences are examples of what you may want to include, except in English Pleasure and Western Pleasure. Those are the only classes where only the horse and its tack will be judged. Props are expected to be in scale as much as possible, and realistic. Some experienced performance showers include doll riders, but if they are not posed correctly on the horse, you will be placed lower. Most performance showers recommend starting without dolls until you get more experience! If you're going to show your horse in performance classes, practice taking the tack on and off correctly, and know how long it will take you. Novice performance judges are patient, but it is best to make sure you've practiced

your setups prior to the show. To save time, you may want to tack up your models that will be showing in performance before you pack them, since they will be the first classes in the morning.

### **CUSTOMS AND ARTIST RESINS**

The Workmanship divisions are for plastic models that have been altered from factory state by adding paint, removing paint (etching), moving or resculpting body parts, for the purpose of making the horse a different color and/or made to represent a different breed. As well as models that have been cast out of resin in small batches (generally less than 1000) by hobby artists and either painted by the sculptor or by another artist. Cold painted china/porcelain models (customs, but on a china body rather than plastic), and custom glaze models (hand glazed by artists, generally one of a kind, not at a factory) are also welcome to compete in Workmanship. Fantasy and Unrealistic models welcome! All these classes will be judged primarily on the skill of the prepping, alteration if applicable, and finish work on the piece. The color classes will compete for a championship and are open to Intermediate level only. The work may be your own or by another artist. This is meant to be an introductory division with the emphasis on how to determine good examples of technique and realism (for the realistic colors).

The Amateur Owner classes will not compete for a championship. They are open to all entrants, but the work must be your own, and you must not be a professional (i.e. you don't sell your work, and your work has not won NAN cards or Championships at any Open level show). These classes are designed to encourage new artists and those who are still developing their skills.

### **WHAT DIVISIONS CAN I SHOW IN?**

If you sign up for Performance Only, you may show in either Novice level or Intermediate level performance (we can discuss which option is best for you) and the Fun Classes.

If you enter the Novice division, you may show in Novice Performance, Novice Breed, Novice Collectibility, Amateur Owner, and Fun Classes.

If you choose Intermediate, you may show in Intermediate Performance, Intermediate Breed, Intermediate Collectibility, Custom/Artist Resin Workmanship, Amateur Owner, and Fun Classes.

There will be almost no competition between Novice and Intermediate level showers, aside from the Amateur Owner division and fun classes.

### **WHICH HORSES SHOW WHERE?**

All brands, finishes, types of materials, and scales of model horses are allowed in the Fun Classes except in classes that specify otherwise.

OF Plastic Models (unaltered factory models)- are allowed in all divisions except the Custom/Artist Resin Workmanship and Amateur Owner divisions. Specific OFP Notes, other than those mentioned in the Collectibility overview:

- Models are only separated by brand for Collectibility divisions. All brands are welcomed to compete together in Breed divisions.

- "Unaltered" refers to not adding to or enhancing the model's look by changing how it appears new from the factory. Touch ups on flaws, or restorations that return the model to "like new" are permissible, so long as they are not noticeable to the judge. Additions or enhancements that would reclassify the horse as a custom include- hoof or eye gloss that wasn't previously present, spray gloss or the application of any substance that alters the look of the finish- such as Armor-All, white markings (i.e. sock, star, blaze, snip, etc.) that the model was not issued with, addition of pigments/paint to add shading to a model that didn't have it/as much before, etching to remove the paint into altered patterns.

Customized Plastic Models- are allowed to show in the Workmanship, Amateur Owner, and Performance Divisions.

Artist Resin Models- these are allowed to show in the Workmanship, Amateur Owner, and Performance divisions.

Customized China/Poreclain/Factory Resin models- These are allowed to compete in the Workmanship and Amateur Owner divisions. These little ones can be very breakable, so please take care when deciding to bring them to show, and with packing!

Original Finish China/Porcelain/Factory Resin models- These are produced by companies as opposed to hobby artists- although some companies do sell versions of hobby resins in porcelain (Animal Artistry and Horsing Around, in England). The only allowable models of this type in the regular show are Breyer Porcelains and Resins in their corresponding Intermediate Collectibility class. These models are VERY breakable and I worry about having too many of them in an environment with people who are not used to model horse shows. They are welcome to compete in the fun classes in classes they are eligible for, however I ask that you please use your discretion when bringing along your "clinkies". If you are a Porcelain/China enthusiast, you will really enjoy the open level shows (once you are comfortable) as some of these have entire divisions for this type of model. :)

## **HOW CAN I LEARN MORE?**

If you are interested in learning even more about model horse showing, check out Jill O' Connor's "Tips For Your First Live Show" here:

<http://www.regionxnation.com/bundles/rxnmain/pdf/Model%20Show%20Tips.pdf>. If you are interested in learning more about the National Show and National Awards, visit [www.namhsa.org](http://www.namhsa.org). If you are on Facebook (or, if you are a child, your parents are), I encourage you to join our "Region 10 NAMHSA" page- there are lots of show updates that happen there, as well as other hobby information. It's a great resource to ask questions about live showing or the hobby in general!

<https://www.facebook.com/groups/Region10NAMHSA/> . For those who like visuals, try searching "model horse show tips" on YouTube- there are quite a few good videos in the top results! Just keep in mind that some of these tips may not apply to how Region 10 runs shows- common practices can vary

from region to region. For example, some areas use index cards for the horse's info that we put on the string tags (because they record their results differently). If you come across anything you aren't sure about, send me a message and I can let you know if it's something you should be prepared for with my show.

## **FUN CLASSES!**

Enter the fun classes for some pretty cool prizes! The entries in the fun classes do not compete for Championships. Limits per class- #1: 1 setup, #2: 3, #3: 2 congas, #4: 3, #5: 2 setups, #6-9: 3, #10: 1.

1. Diorama (realistic or unrealistic)
2. Other Material Models- this includes model horses made of wood, metal, leather, etc. Any material that is not plastic, resin, or porcelain/china.
3. Conga/Theme! All one mold, all one color, all one breed, etc. Must have a theme and have at least 4 models.
4. Theme Song! Naming horses after songs or song lyrics is a popular naming tactic. Write a card with your horse's name and explain what the horse's name means to you (printout of song lyrics - full or snippet - is not required but encouraged! Must be family friendly please).
5. Family Photo! Set up your "family" as if they were getting a portrait done! Can be as serious or as funny as you want.
6. Other Animals Domestic
7. Other Animals Wild
8. NEW for 2020- Friendship Frenzy! Find another entrant to create an entry with- this may be someone you don't know, but it can also be someone you've met before (I am also happy to introduce you to others if you aren't comfortable approaching someone yourself.) Your co-op entry may be a set up or conga, whichever works best with what you both have on hand. There must be at least one model included from each person's supply. If neither of you shows Performance, you'll want to do a conga-remember that doesn't have to just be all the same mold! Use your creativity! Fun class prizes will be awarded to both partners. (\*If there is an uneven number of people who want to participate, I may allow for a group of 3.) \*\*If you are going to collaborate with someone else that you already know, you may NOT do any preparation for the class ahead of time as this would give you an unfair advantage.
9. Model Emergency! Bring your most beat up model or failed custom!
10. My Favorite Horse- write an explanation card for why the model is your favorite.

## **LIMITS**

Limits- 1 setup per entrant in each Performance class, 3 per class in Collectibility and Breed. 3 per class in the CM/AR division (4 each in the AO Classes). No overall limits of how many horses you may bring, but keep in mind how much table space you will have. **\*If a horse does not place in its breed, workmanship, or collectibility class, you may NOT change the breed/information to show it in another class!\***

## **STRUCTURE OF CLASS ORDER**

There will be 4 sets of rings as opposed to 2 sets, to help keep the show moving along at a good pace and help with issues people had in the past of sitting around and waiting for their divisions to come up. There may be some entry overlap for the Intermediates. Please let the judges and I know if you run into any conflicts and we will accommodate as best we can.

RINGS 1 & 2- ALL Novice Level classes, starting with Performance, then Breed, and lastly Collectibility

RINGS 3 & 4- Intermediate Performance, then Intermediate Collectibility

RINGS 5 & 6- Intermediate Breed

RINGS 7 & 8- Workmanship, Amateur Owner, and then the Fun Classes

I will be providing a spreadsheet printout (available online prior to the show and printed the day of) that will show all the divisions in call order sorted by their respective rings. It will include space to write your models' names next to the classes if that is something that will help you!

## **CLASSLIST**

### RINGS 1 & 2

#### **PERFORMANCE- NOVICE**

1. Other Performance
2. Western Performance
3. English Performance

#### **NOVICE PERFORMANCE CHAMPIONSHIP**

#### **BREED- NOVICE**

1. Light/Gaited/Spanish/Sport Foals
2. Stock/Draft/Pony/Other Foals
3. Pattern Color Stock Breeds (Pinto or Appaloosa colored)

4. Solid Color Stock Breeds

5. Pony Breeds

6. Draft Breeds

7. Longears/Exotics

8. Arab/Part Arab

9. Morgan/Other Light

10. American Gaited

11. Spanish Breeds

12. TB/STB

13. WB/Other Sport

OVERALL BREED- Champ/Reserve & Top 10

**COLLECTIBILITY- NOVICE**

1. Vintage RR Breyer (1950-1979)

2. Contemporary RR Breyer (1980-1999)

3. Modern RR Breyer (2000-2020)

4. BreyerFest SR

5. Other SR

6. All Other Brands

NOVICE COLLECTIBILITY CHAMPIONSHIP

RINGS 3 & 4

**INTERMEDIATE PERFORMANCE**

1. Other Performance (not English or Western)

2. Parade/Costume

3. Other Western

4. Western Trail



5. Western Pleasure
6. Other English
7. English Trail
8. English Pleasure

#### PERFORMANCE CHAMPIONSHIP + TOP 3

#### **INTERMEDIATE COLLECTIBILITY**

1. Breyer Regular Run 1950-1979
2. Breyer Regular Run 1980-1999
3. Breyer Regular Run 2000-2006
4. Breyer Regular Run 2007-2013
5. Breyer Regular Run 2014-2020

#### *BREYER RR SECTIONAL CH/RS*

6. Breyer Special Run of 500 or Fewer
7. Breyer Special Run- BreyerFest Models (501+ made) Celebration/Ticket Models (3-day and 1-day)
8. Breyer Special Run- BreyerFest Models (501+ made) Other Special Runs
9. Breyer Special Run- Other Breyer Event or Direct Sale (501+ made)\*
10. Breyer Special Run- Retailer Exclusive or Real Horse Event (501+ made)\*

*\* see descriptions above for what qualifies for classes 9 & 10*

#### *BREYER SR SECTIONAL CH/RS*

11. Peter Stone Models Run of 100+
12. Peter Stone Models Run of 99 or Fewer
13. Other Brands- Copperfox, Hartland, Knockoff-Plastic Style Brands (see descriptions in Collectibility guidelines)
14. Other Brands- Papo, Schleich, Julip, Equorum, etc. (Rubber & Haired Brands)
15. Breyer Porcelain & Resins

*OTHER SECTIONAL CH/RS*

COLLECTIBILITY CHAMPIONSHIP

RINGS 5 & 6

**INTERMEDIATE BREED**

1. Thoroughbred/Standardbred
2. European Warmblood
3. Carriage Breeds
4. Other Sport Pure/Part

*SPORT BREEDS CHAMPIONSHIP*

5. British Pony
6. Other European Pony
7. American/Other Pony

*PONY BREEDS CHAMPIONSHIP*

8. British Draft
9. Other European Draft
10. American/Other Draft

*DRAFT BREEDS CHAMPIONSHIP*

11. Appaloosa
12. Paint
13. Quarter Horse
14. Mustang/Other Stock

*STOCK BREEDS CHAMPIONSHIP*

15. American Saddlebred
16. Other American Gaited
17. Spanish Non-Gaited Breeds

18. Spanish Gaited Breeds

*SPANISH/GAITED CHAMPIONSHIP*

19. Arabian

20. Part-Arabian

21. Morgan/Other Light

*LIGHT BREEDS CHAMPIONSHIP*

22. Mules/Donkeys/Exotics

23. Other Breeds Not Listed/Mix/Grade

*OTHER BREEDS CHAMPIONSHIP*

24. Sport Foals

25. Draft/Pony/Other Foals

26. Stock Foals

27. Spanish/Gaited Foals

28. Light Breed Foals

*FOAL CHAMPIONSHIP*

OVERALL BREED CHAMPIONSHIP

RINGS 7 & 8

**CUSTOM/ARTIST RESIN**

1. Chestnut

2. Bay/Brown

3. Black

4. Dilute Solid Colors (Palomino, Buckskin, Dun, Cream, Cremello, Perlino, Silver Dilutes, Champagne Dilutes, etc.)

5. All Grays

6. Roan & Rabicano \*Rabicano is more of pattern in looks but genetically it is closer to roan, so it shows in this class.

7. Overo Pinto
8. Tobiano Pinto
9. Leopard Appaloosa
10. Blanket Appaloosa
11. Other Pinto/Appaloosa & Unusual Patterns
12. Unrealistic color + Fantasy

TOP 10 + CHAMPION/RESERVE CM/AR

#### **AMATEUR OWNER**

1. Simple Repaint
2. Simple CM- ear, tail, mane tweaks
3. Moderate to Heavy CM- legs, neck, head tweaks (may also have Simple tweaks) or more
4. Etched Models
5. NaMoPaiMo models (horses completed as part of the annual February painting initiative held by Jennifer Buxton on Facebook, you may enter any horse that was your official entry or posted in the group as an "I did this too") \*Your horse(s) may enter this class AND whichever class, 1-4 in this section fits them the best. (This was a Fun Class in 2019.)

#### **FUN CLASSES (See list above)**

#### **BREED GUIDELINES:**

Here is a general list of which breeds are considered to be part of which categories. I've tried to put this more in order and aligned with the classes. If you can't find the breed you want to assign on this list, let me know and I can help figure out where to put it. Certain classes are for 1-2 specific common breeds and will not be on this list.

#### **European Warmbloods**

Austrian Warmblood, Bavarian Warmblood, Belgian Warmblood, Brandenberger, Budyonny, Czech Warmblood, Danish Warmblood, Dutch Warmblood, East Bulgarian, Finnish Universal, Frederiksborg, Hanoverian, Holstein, Hungarian Warmblood, Irish Draft/Draught, Irish warmblood, Kisber Felver,

Malapolski, Mecklenburg, Oldenburg, Rhineland/Zweibrucker, Russian Don, Selle Francais, Swedish Warmblood, Swiss Warmblood, Trakehner, Ukrainian Riding Horse, Wielkopolski, Wurttemberg,

### **Carriage & Driving Breeds**

Belorussian Harness Horse, Cleveland Bay, Dolahest (aka Dole Gudbrandsal & Dole), Dutch Harness Horse (aka Tuigpaard), East Friesian, Friesian, Gelderlander, Georgian Grande, Gypsy Vanner (aka Gypsy Cob, Irish tinker, Coloured Cob, Tinker Horse), Hackney Horse, Kladruber, Knabstrup, Latvian Harness Horse, Morisien, Norman/Normandy Cob

### **Other Sport**

Akhal Teke, Nez Perce Horse, Anglo-Arabian (incl. all registries), Anglo-Kabarda, Appaloosa Sport Horse, Australian Waler, Canadian Pacer, French Trotter, Friewalker, Gidran Arabian, Gidran Sport Horse, Metis Trotter, Orlov Trotter, Pleven, Shagya Arabian, Spanish Norman, Warlander

### **British Isles Draft**

Clydesdale, Shire, Suffolk Punch

### **European Draft Breeds**

Ardennes, Auxios, Belgian (aka Brabant), Black Forest Horse, Boulonnais, Breton, Comtois, Dutch Heavy Draft, Estonian Draft, Finnish Draft, Frances-Montagnes (aka Frieberger), Furioso (aka Furioso-North Star), German Warmblood, Italian Heavy Draft, Jutland, Lithuanian Heavy Draft, Mulassier (aka Poitevin), Murakozi, Noriker (aka Oberlander, Pinzgauer), North Swedish Draft, Percheron, Rhineland Draft, Russian Heavy Draft, Schleswig Heavy Draft, Sokolsky, Soviet Heavy Draft, Swedish Ardennes, Toric, Trait du Nord, Vladimir Heavy Draft

### **American Draft**

American Cream Draft, North American Spotted Draft, American Belgian, American type Percheron, Sugarbrush Draft

### **British Isles (UK) Ponies**

Connemara Pony, Dales Pony, Dartmoor Pony, Eriskay Pony, Exmoor Pony, Fell Pony, Hackney Pony, Highland Pony, Kerry Bog Pony, Lundy Pony, New Forest Pony, Shetland Pony, Welsh Pony/Cob (All Section A, B, C & D)

### **European Pony**

Albanian, Ariegeois, Astercon (aka Asturian & Galician), Avelignese Pony, Balearic, Bardigiano Pony, Bashkir Pony, Basque Pony (aka Pottock), Bosnian Pony, Camargue, Carpathian Pony (aka Hucul), Dulman Pony, Faeros, French Saddle Pony, Garrano, German Riding Pony, Gotland Pony (aka Skorgruss), Haflinger, Icelandic, Konik Pony, Landais Pony, Lyngshest (aka Nordlandshest), Manchurian, Merens Pony,

Northlands Pony, Norwegian Fjord, Ob (aka Priob), Peneia Pony, Pindos (aka Thessalian), Sardinian Pony, Sykros Pony, Viatka Pony, Yakut, Zemaituka Pony

### **American, Australian, African, and Asian Ponies (Other Pony Classes)**

American Shetland Pony (all divisions), American Walking Pony, Assateague/Chincoteague Pony, Banker Pony (aka Shackleford), Falabella, Galiceno Pony, Miniature Horse, Newfoundland Pony, Petiso Argentino, Pony of the Americas, Quarter Pony, Sable Island Pony, Welara Pony, Anadolu (aka Ati), Australian Pony, Kaimanawa, Basotho (aka Basuto), Fleuvre (aka Fouta & M'Bayar), Kirdi, Nooitgedacht, Poney Mousseye, Batak Pony, Bhutia (aka Spiti) Pony, Burmese Pony (aka Shan), Caspian Pony, Cheju, Chinese Guoxia Pony, Flores (aka Timor), Gayoe, Guangxi, Guizhou, Hokkaido, Java Pony (aka Kumingan), Kazakh Pony, Lijiang, Manipuri Pony, Misaki, Noma, Sandalwood Pony, Sumba (aka Sumbawa), Syrian Pony, Taishuh, Tibetan Pony, Tokara, Yangi

### **Other Stock Breeds**

American Cream, Australian Stock Horse, Bashkir Curly, Cayuse, Colorado Rangerbred, Nokota

### **American Gaited Breeds**

American Saddlebred, Kentucky Saddle Horse, McCurdy Plantation Horse, Missouri Fox Trotter, North American Single-Footer, Rocky Mountain Horse, Spotted Saddle Horse, Tennessee Walking Horse, Tenuvian, Tiger Horse, Virginia Highlander, Walkaloosa

### **Spanish/Iberian Non-Gaited**

Andalusian/PRE (Carthusian/Cartujano/Extremeno/Zapatero), Azteca, Carolina Marsh Tacky, Castilian, Chilean Corralero, Criollo, Florida Cracker Horse, Hispano-Arab, Kiger Mustang, Lac La Croix, Indian Pony, Lippizzaner, Lusitano/PSL/Alter Real, Menoquina, Moyle, Pampas Horse, Pantanerio Horse, Sorraia, Spanish Barb, Spanish Mustang, Spanish Sulpher Horse

### **Spanish/Iberian Gaited**

Mangalarga Marchador, Paso Fino, Peruvian Paso, Spanish Jennet

### **Light Breeds**

Barb, Camarillo White Horse, Canadian Horse, Iomud, Marwari, Kathiawari, Morgan, Turkoman, Renai, and Arab crosses such as : Ara-loosa/Ara-App, Morab, Quarab, National Show Horse, etc.

### **Longears/Exotics**

Asian/Asiatic Wild Horse, Balis, Burro, Donkey, German Heck Horse, Kiangas, Mongolian Mules (All Types), Onager, Przewalski, Quagga, Tarpan

### **Other Pure Breed Horse**

Abtenauer, Abyssinian, Aegidienberger, Altai, Andravidia, Australian Brumby, Balikun, Ban-ei, Boer (aka Boerperd), Bulichi, Calabrese, Campolina, Cretan Horse, Danubian, Deliboz, Djerma, Dongola, Estonian Native, Heihe, Hequ, Hirzai, Indian Half-Bred, Jinzhou, Kabarda (aka Kabardin), Karabair, Karabakh, Karacabey, Kinsky, Kiso, Kushum, Kustanair, Latvian, Lokai, Losino, Maremmana, Messara, Miyako, Murghese, Nonius, Novokirghiz, Qatgani, Rottaler, Salernitano (aka Salerno), San Fratello, Sanhi, Sardinian, Talweed, Tchernomor (aka Chernomor), Tersk, Tori, Unmol, Uzunyayla, Ventasso, Vlaamperd, Xilingol, Yili, Zhemaichu (aka Zhumdka)

## Entry Form

Name: \_\_\_\_\_

Region 10 #: \_\_\_\_\_ (This is REQUIRED. Get your number first if you don't have one!)

Division Entering (select one):

INTERMEDIATE  NOVICE  PERFORMACE ONLY (NOVICE)  PERFORMANCE ONLY  
(INTERMEDIATE)

Address: \_\_\_\_\_

Address (2<sup>nd</sup> line): \_\_\_\_\_

Email: \_\_\_\_\_

Who would you like to sit with? \_\_\_\_\_

Payment method:  CHECK  MONEY ORDER  PAYPAL

Total Amount Due: \_\_\_\_\_

*Please make checks or money orders payable to Amanda Reed. My PayPal address is pixelperfectstables@gmail.com.*

*My address is:*

*Amanda Reed*

*Unit 3427*

*75 Hockanum Boulevard*

*Vernon, CT 06066*

*OR email this form to pixelperfectstables@gmail.com*

ENTRY DEADLINE is SATURDAY, July 25th. If there is still room for entries after that, I will accept them, but please be aware that you will be charged a \$5 late fee.